



BENNETT + BENNETT

Surveyors + Planners

Gold Coast Light Rail (Stage 1) Gold Coast, QLD

G:Link changed the face of public transport on the Gold Coast and provided locals and tourists with a new and reliable means of transportation.

The Gold Coast Light Rail consists of a 13 kilometre, 16 station line which operates between the Gold Coast University Hospital and Broadbeach. Bennett + Bennett provided the initial surveys for Stage 1 of the project. This included corridor detail surveys and land resumptions/road widening.

In addition we then provided the set out of new structures and services including the as-built position of those, leading to a full as-constructed model of the section (from Sundale Bridge to Broadbeach)

In order to drive the success of this project, Bennett + Bennett remained ahead of construction and maintained the integrity of the above and below ground structures and services.

Services Provided

Surveying:

- Initial detail surveys
- Cadastral (boundary), easement & resumption surveys
- Infrastructure set out
- Maintenance of construction data

Completed

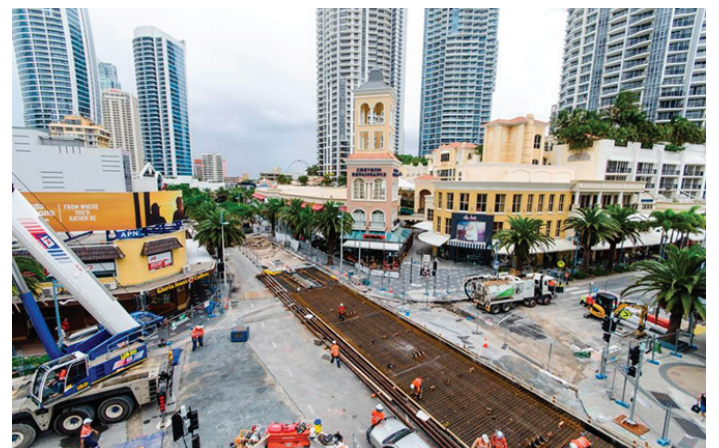
- 2015

Client



 Queensland Government

Department of Transport and Main Roads



Experience, Resources... Results

www.bennettandbennett.com.au